

in TAJIMI



Hands on tour

Tajimirukomichi

for Foreigners



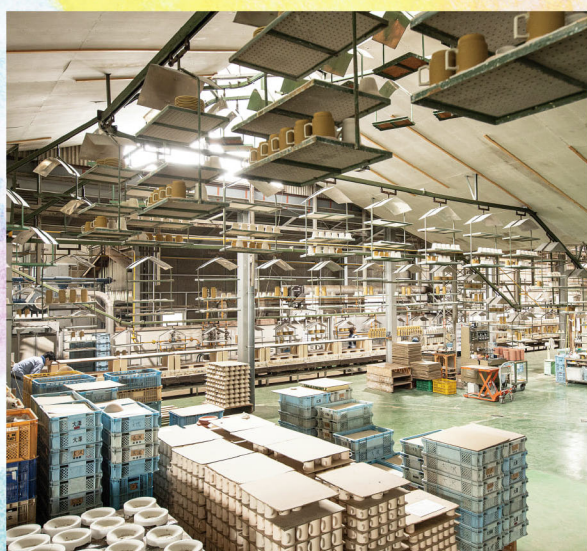
About Tajimirukomichi

The people living in this city will become your “guiding partners” . The program is about providing experience of our city, that you can only have here.

When is the program running?

START October 10 (Thu) ~

END December 22 (Sun)



Tajimirukomichi Official Website
check the #English program ●●▶



How to Apply

Please make reservations for English programs directly to the program office by email or phone. Inquiries regarding English programs should also be made by email or phone.

※Beyond the English programs we offer around 70 different programs for Japanese speakers. Please access our website for further information.

Tajimi Tourism Association (Tajimiru komichi)
Tajimi Hinode-cho 2-15 / Ms. Muto, Ms. Hibino
Email: tajimirukomichi@tajimi-prc.com

Tel: 0572-51-8156 (8:30-17:00 / Closed on Saturdays and Sundays)
Operation and Management: Tajimi Tourism Association



Tour & Try

the World of Tiles

Date: Oct. 23

Time: 10:00 - 14:30

Venue: Mosaic Tile Museum Tajimi, others.

2082-5 Kasahara-cho, Tajimi-shi, Gifu-ken 507-0901

Price: 500 yen / Participants: Max 10 persons



Down to earth experience conducted by the Mosaic Tile Museum. We start at the museum and visit local tile manufacturers. Try your hand at tile making in a tour designed by working staffs of each manufacturers.

Further details: This program (Factory tour and hand crafting experience) is designed for up to five Japanese and five foreign participants. The ratio may change depending on demand. Foreigners are asked to apply by email. If the tour is full further applicants are put on a waitlist and will be contacted by mail if there are cancellations. The tour takes place October 23 (Wed) 9:45 - 14:30.

Program:

- 9:45** Meetup at the Mosaic Tile Museum.
- 10:00** Sugiura Ceramics
Here we will study the tiles production process from molding to firing. The participants will add patterns to the tiles before firing. (The tiles will be glazed and fired afterwards, and posted to the participants a few days after the event).
- 12:00** Return to the museum for lunch (participants eat individually).
- 13:00** We walk from the museum to Maruman Shokai company.
Here we will study how fired tiles are assembled in sheets (30 X 30cm). We will try applying tiles to a board using a paper or a net, and assemble them into a sheet.
- 14:00** Return to the museum for a guided tour of the 4th and 3rd floors.
- 14:30** End of the tour

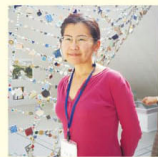
The maximum number of participants is ten people, so we recommend that you apply early.

Reservations:

e-mail : info@mosaictile-museum.jp
tel : 0572-43-5101

Inquiries:

Mosaic Tile Museum Tajimi
0572-43-5101 (Office hours: 9:00 - 17:00)
Person in charge: Ms. Murayama
Closed: Mondays
(the following weekday if Monday is a holiday)
info@mosaictile-museum.jp



Guide Profile

Ms.Nodoka Murayama, curator of the Mosaic Tile Museum Tajimi

She leads the exhibition group. Her main responsibilities include planning of exhibitions on the 3rd floor, town walks and other events, and guiding exhibition visitors.



Factory tour

Amusement Factory

Date: Sep. 16, Oct. 14, Nov. 4

Time: 9:15 - 11:45

Venue: MARUASA PORCELAIN FACTORY co.,Ltd 3-8 Hoshigadai, Tajimi-shi, Gifu-ken 507-0811 **Price: 2,000 yen / Participants: Max 20 persons**

A "free curve" gondola. A high speed potter's wheel. A mammoth 1320°C kiln. 300 types of tableware. Experience the meeting of high volume and quality. Bring home a special cup gift!

Further details: Photo restricted areas inside the production facility. Persons related to the same industry must indicate this at the time of application.



Guide Profile

Ms.Kondo, Production staff, MARUASA PORCELAIN FACTORY co.,Ltd



She is working hard to make a contribution to the local industry. She loves crafting things by hand. Her speciality is hand-painted design, which she strives to improve in her daily work.

Reservations:

e-mail : info@maruasa.jp / tel : 0572-22-8287

Inquiries:

MARUASA PORCELAIN FACTORY co.,Ltd.
Person in charge: Ms.Yamamoto
0572-22-8287 (Office hours: 9:00 - 16:45)
Closed: Saturdays, Sundays
info@maruasa.jp



Make Your Own Tableware Design

Date: Every Wednesday during the event period

Time: 10:00 - 12:00



Venue: F. Marumo Takagi Toki KK, 1-12-1 Ichinokura-cho, Tajimi-shi, Gifu-ken 507-0814 **Price: 1,500 yen / Participants: Max 3 persons**

Use ceramic decals to create a uniquely designed piece of tableware. Learn about the whole production process. What you created before noon will be delivered to you the same day.

In addition to the tour fee you will buy a 500 yen ceramic (cash only). You will also receive a 1000 yen gift card valid in the shop. Your designed ceramics will be available for pickup at Marumo Takagi Ceramics from 16:00 on the day of the event.



Guide Profile

Ms. Michiko Ishizu

Working hard to increase the awareness of Mino ware.

Reservations:

e-mail : m.ishizu@marumo-century.com

tel : 0572-22-3810

Inquiries: K. Marumo Takagi Toki KK 0572-22-3810 (Office hours: 9:15 - 17:15)

Person in charge: Ms. Ishizu Closed: Saturdays, Sundays, holidays m.ishizu@marumo-century.com



Make a Pottery Candle Holder

Date: October 10 - December 22

Time: 10:00 - 15:30



Venue: Kobeigama Sakutoukan (pottery workshop studio) 4-30-2 Ichinokura-cho, Tajimi-shi, Gifu-ken 507-0814

Price: 3,000 yen / Participants: No limit on group size

After a tour of the Ichinokura Sakazuki Art Museum, design your own candle holder by carving it from a 12 cm high cylindrical piece of clay. Kind and gentle guidance for everyone.

Further details: ★To make a reservation and confirm seat availability, please contact us at least five days before the day you wish to participate. ★The admission fee for the Ichinokura Sakazuki Art Museum (400 yen) is included in the event fee. ★The event takes about two hours. ★You can choose from 7 different glaze colours (green, black, blue, yellow, etc.). ★Your piece will be finished about one to one-and-a-half months after the event. You can pick up the piece at the Kobeigama Sakutoukan or have it sent to you. Postal fees are 1,000 yen within Japan and 3,900 yen for overseas recipients. ★You will create a piece of pottery which may be damaged during drying or firing. Should the piece be badly damaged we will replace it with another one. We ask for your understanding of the necessity of this arrangement.

Inquiries:

Kobeigama Sakutoukan (pottery workshop studio)

0572-22-0509 (Office hours: 10:00 - 17:00)

info@sakazuki.or.jp Person in charge: Ms. Ito Closed: Tuesdays, Wednesdays

Reservations:

e-mail : info@sakazuki.or.jp

tel : 0572-22-0509



Guide Profile

Ms. Mariko Ito (right in picture, pottery workshop instructor)

Ms. Eri Hibino (left in picture, art museum guide)

You will be able to enjoy viewing finely painted, beautiful sake cups at the Ichinokura Sakazuki Art Museum. Please come and enjoy pottery and pottery making both visually and practically with your own hands!